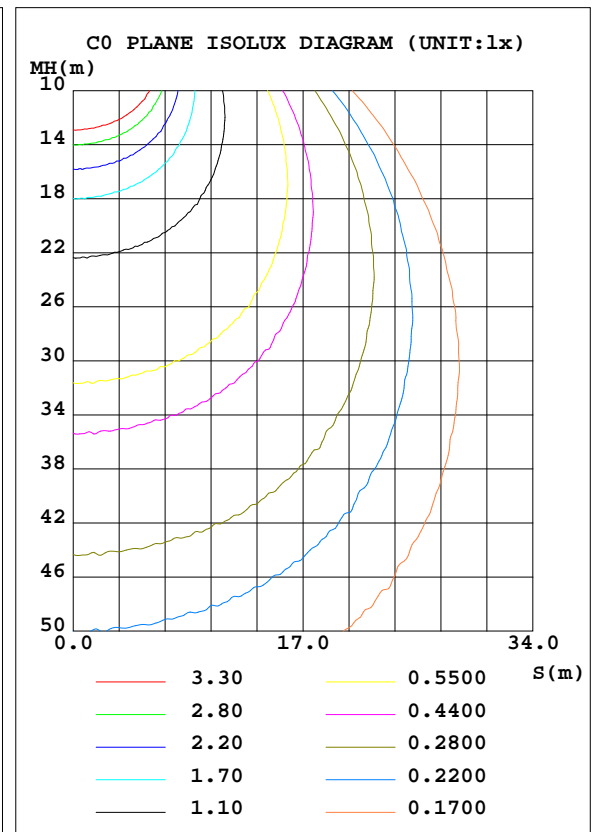
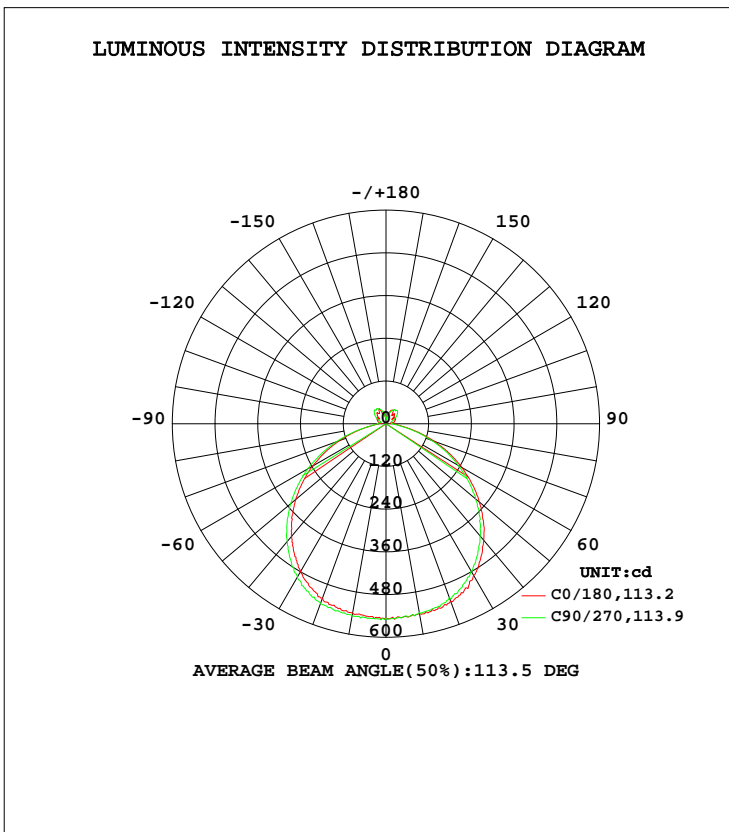


LUMINAIRE PHOTOMETRIC TEST REPORT

Test:U:120.12V I:0.2098A P:25.070W PF:0.9940 Freq:60.00Hz Lamp Flux:1783.2lx1 lm		
NAME:	TYPE:	WEIGHT:
SPEC.:	DIM.:	SERIAL No.:
MFR.:	SUR.:	Shielding Angle:

DATA OF LAMP		PHOTOMETRIC DATA Eff: 71.13 lm/W			
MODEL	27P-26S-952C5-120D-WH	I _{max} (cd)	551.3	S/MH(C0/180)	1.29
NOMINAL POWER(W)	25	LOR(%)	100.0	S/MH(C90/270)	1.34
RATED VOLTAGE(V)	120	TOTAL FLUX(lm)	1783.2	η UP, DN(C0-180)	5.0,44.3
NOMINAL FLUX(lm)	1783.21	CIE CLASS	SEMI-D.	η UP, DN(C180-360)	5.2,45.5
LAMPS INSIDE	1	η up(%)	10.1	CIBSE SHR NOM	1.25
TEST VOLTAGE(V)	120	η down(%)	89.9	CIBSE SHR MAX	1.35



C Range: 0 - 360DEG
 C Interval: 22.5DEG
 Test Speed: HIGH
 Temperature:25.1DEG
 Operators:Wilson
 Test Date:2022-12-15

γ Range: 0 - 180DEG
 γ Interval: 0.5DEG
 Test System:EVERFINE GO-R5000_V2 SYSTEM V2.00.444
 Humidity:60.5%
 Test Distance:2.635m [K=1.0000]
 Remarks: File No.: WT-F-504-3206-01-A

Checker: Near Gao

Assessor: Akin Xu

ZONAL FLUX DIAGRAM

ZONAL FLUX DIAGRAM:

γ	C0	C45	C90	C135	C180	C225	C270	C315	γ	Φ zone	Φ total	%lum, lamp
10	540.1	541.7	538.4	537.6	540.5	543.5	547.2	546.1	0- 10	51.96	51.96	2.91,2.91
20	530.1	527.6	520.1	522.9	521.6	530.9	537.2	535.5	10- 20	152.0	204.0	11.4,11.4
30	492.0	488.7	478.3	474.2	479.4	490.2	497.6	499.2	20- 30	235.7	439.7	24.7,24.7
40	427.3	419.7	411.3	408.2	412.1	423.0	431.7	431.5	30- 40	285.4	725.2	40.7,40.7
50	341.1	336.7	328.2	324.8	330.0	341.0	349.8	349.7	40- 50	293.8	1019	57.1,57.1
60	245.9	240.8	234.2	232.5	238.1	246.3	254.9	253.6	50- 60	260.4	1279	71.7,71.7
70	144.5	140.3	135.5	134.1	138.4	144.7	149.2	147.8	60- 70	190.2	1470	82.4,82.4
80	53.04	52.12	47.12	45.51	51.57	55.26	54.29	53.36	70- 80	99.20	1569	88,88
90	23.44	22.28	18.88	18.05	21.35	23.70	22.93	22.61	80- 90	34.02	1603	89.9,89.9
100	17.68	12.55	15.59	10.72	16.26	12.77	18.31	12.33	90-100	18.42	1621	90.9,90.9
110	26.97	24.28	16.88	20.18	24.92	22.83	16.66	22.62	100-110	18.73	1640	92,92
120	29.85	34.83	28.60	31.28	26.47	33.55	28.31	34.21	110-120	24.79	1665	93.4,93.4
130	25.71	43.84	41.66	41.50	27.08	43.21	41.84	43.01	120-130	30.46	1695	95.1,95.1
140	37.49	44.60	49.34	44.01	40.05	46.69	50.20	46.29	130-140	32.04	1727	96.9,96.9
150	40.62	45.19	45.89	41.93	36.92	44.54	49.21	45.61	140-150	25.94	1753	98.3,98.3
160	39.34	37.13	34.09	35.94	34.21	38.94	42.16	36.20	150-160	19.40	1773	99.4,99.4
170	23.48	22.64	19.90	22.56	24.71	24.62	30.92	15.51	160-170	8.882	1781	99.9,99.9
180	16.82	18.66	18.74	16.38	16.84	18.64	18.79	16.37	170-180	1.741	1783	100,100
DEG	LUMINOUS INTENSITY:cd									UNIT:lm		

Conical surface Flux(90deg): 873.69 lm

%lum = 49.0%
 %lamp = 49.0%

Conical surface Flux(120deg): 1279.4 lm

%lum = 71.7%
 %lamp = 71.7%

C Range: 0 - 360DEG
 C Interval: 22.5DEG
 Test Speed: HIGH
 Temperature:25.1DEG
 Operators:Wilson
 Test Date:2022-12-15

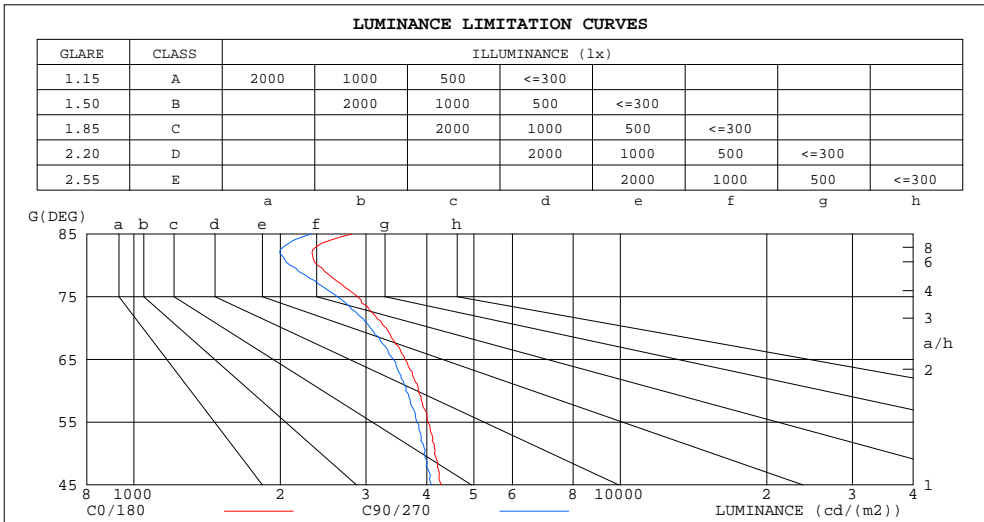
γ Range: 0 - 180DEG
 γ Interval: 0.5DEG
 Test System:EVERFINE GO-R5000_V2 SYSTEM V2.00.444
 Humidity:60.5%
 Test Distance:2.635m [K=1.0000]
 Remarks: File No.: WT-F-504-3206-01-A

Checker: Near Gao

Assessor: Akin Xu

LUMINANCE LIMITATION CURVES

Test:U:120.12V I:0.2098A P:25.070W PF:0.9940 Freq:60.00Hz Lamp Flux:1783.2lx1 lm		
NAME:	TYPE:	WEIGHT:
SPEC.:	DIM.:	SERIAL No.:
MFR.:	SUR.:	Shielding Angle:



LUMINANCE cd/(m2)		
G(DEG)	C0/180	C90/270
85	2803	2313
80	2389	2098
75	2883	2622
70	3304	3065
65	3606	3420
60	3846	3622
55	4021	3821
50	4151	3949
45	4288	4089

C Range: 0 - 360DEG
 C Interval: 22.5DEG
 Test Speed: HIGH
 Temperature:25.1DEG
 Operators:Wilson
 Test Date:2022-12-15

γ Range: 0 - 180DEG
 γ Interval: 0.5DEG
 Test System:EVERFINE GO-R5000_V2 SYSTEM V2.00.444
 Humidity:60.5%
 Test Distance:2.635m [K=1.0000]
 Remarks: File No.: WT-F-504-3206-01-A

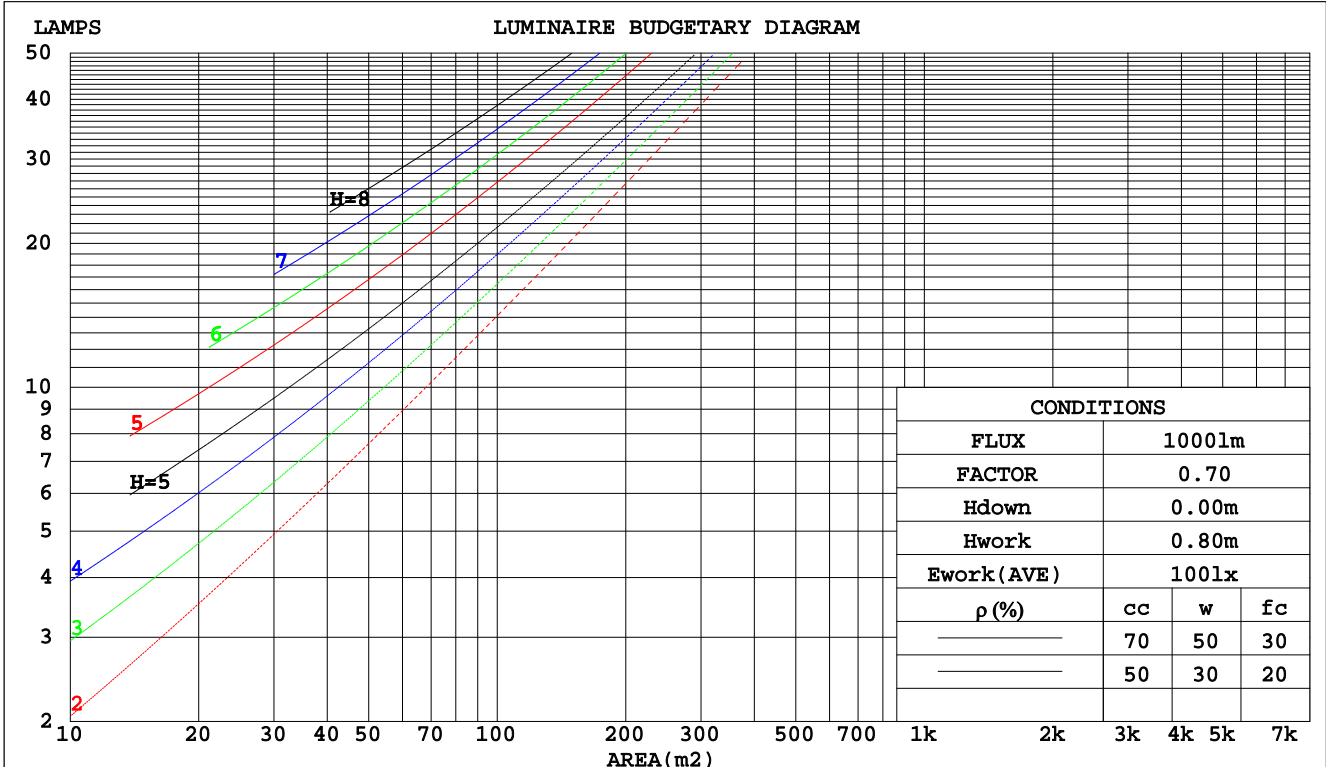
Checker: Near Gao

Assessor: Akin Xu

CU AND LUMINAIRE BUDGETARY ESTIMATE DIAGRAM

Test:U:120.12V I:0.2098A P:25.070W PF:0.9940 Freq:60.00Hz		
Lamp Flux:1783.2lx1 lm		
NAME:	TYPE:	WEIGHT:
SPEC.:	DIM.:	SERIAL No.:
MFR.:	SUR.:	Shielding Angle:

pcc	80%			70%			50%			30%			10%			0
	50%	30%	10%	50%	30%	10%	50%	30%	10%	50%	30%	10%	50%	30%	10%	0
pw																0
pfc	20%			20%			20%			20%			20%			0
RCR	RCR:Room Cavity Ratio						Coefficients of Utilization(CU)									
0.0	1.17	1.17	1.17	1.13	1.13	1.13	1.05	1.05	1.05	.99	.99	.99	.93	.93	.93	.90
1.0	1.02	.98	.94	.99	.95	.91	.93	.89	.87	.87	.84	.82	.82	.80	.78	.75
2.0	.89	.82	.77	.86	.80	.75	.81	.76	.72	.76	.72	.68	.72	.68	.66	.63
3.0	.78	.70	.64	.76	.68	.62	.71	.65	.60	.67	.62	.58	.63	.59	.56	.53
4.0	.69	.60	.54	.67	.59	.53	.63	.57	.51	.60	.54	.49	.57	.52	.48	.45
5.0	.62	.53	.46	.60	.52	.46	.57	.50	.44	.54	.48	.43	.51	.46	.41	.39
6.0	.55	.47	.40	.54	.46	.40	.51	.44	.39	.49	.42	.38	.46	.41	.36	.34
7.0	.50	.42	.36	.49	.41	.35	.46	.39	.34	.44	.38	.33	.42	.37	.32	.30
8.0	.46	.37	.32	.45	.37	.31	.42	.35	.30	.40	.34	.30	.39	.33	.29	.27
9.0	.42	.34	.28	.41	.33	.28	.39	.32	.27	.37	.31	.27	.36	.30	.26	.24
10.0	.39	.31	.26	.38	.30	.25	.36	.29	.25	.34	.28	.24	.33	.28	.24	.22



C Range: 0 - 360DEG
 C Interval: 22.5DEG
 Test Speed: HIGH
 Temperature:25.1DEG
 Operators:Wilson
 Test Date:2022-12-15

γ Range: 0 - 180DEG
 γ Interval: 0.5DEG
 Test System:EVERFINE GO-R5000_V2 SYSTEM V2.00.444
 Humidity:60.5%
 Test Distance:2.635m [K=1.0000]
 Remarks: File No.: WT-F-504-3206-01-A

Checker: Near Gao

Assessor: Akin Xu

WEC AND CCEC

Test:U:120.12V I:0.2098A P:25.070W PF:0.9940 Freq:60.00Hz		
Lamp Flux:1783.2lx1 lm		
NAME:	TYPE:	WEIGHT:
SPEC.:	DIM.:	SERIAL No.:
MFR.:	SUR.:	Shielding Angle:

ρcc	80%			70%			50%			30%			10%			0
ρw	50%	30%	10%	50%	30%	10%	50%	30%	10%	50%	30%	10%	50%	30%	10%	0
ρfc	20%			20%			20%			20%			20%			0
RCR	RCR:Room Cavity Ratio						Wall Exitance Coefficients(WEC)									
0.0																
1.0	.302	.172	.054	.292	.167	.053	.273	.157	.050	.256	.148	.047	.240	.139	.045	
2.0	.284	.155	.048	.275	.151	.047	.258	.143	.044	.242	.136	.042	.228	.129	.041	
3.0	.263	.140	.042	.255	.136	.041	.239	.130	.039	.225	.123	.038	.212	.118	.036	
4.0	.243	.126	.037	.236	.123	.036	.222	.118	.035	.209	.112	.034	.197	.107	.033	
5.0	.225	.115	.033	.218	.112	.033	.206	.107	.032	.194	.103	.031	.184	.098	.029	
6.0	.209	.105	.030	.203	.103	.030	.192	.098	.029	.181	.094	.028	.171	.090	.027	
7.0	.195	.096	.027	.189	.094	.027	.179	.091	.026	.169	.087	.025	.160	.083	.025	
8.0	.182	.089	.025	.177	.087	.025	.168	.084	.024	.159	.081	.023	.151	.077	.023	
9.0	.171	.083	.023	.166	.081	.023	.158	.078	.022	.150	.075	.021	.142	.072	.021	
10.0	.161	.077	.021	.156	.076	.021	.149	.073	.021	.141	.070	.020	.134	.068	.019	

ρcc	80%			70%			50%			30%			10%			0
ρw	50%	30%	10%	50%	30%	10%	50%	30%	10%	50%	30%	10%	50%	30%	10%	0
ρfc	20%			20%			20%			20%			20%			0
RCR	RCR:Room Cavity Ratio						Ceiling Cavity Exitance Coefficients(CCEC)									
0.0	.268	.268	.268	.229	.229	.229	.156	.156	.156	.090	.090	.090	.029	.029	.029	
1.0	.258	.234	.213	.220	.201	.183	.151	.138	.127	.087	.080	.074	.028	.026	.024	
2.0	.249	.210	.177	.214	.181	.153	.146	.125	.107	.084	.073	.063	.027	.024	.020	
3.0	.242	.193	.154	.207	.166	.134	.142	.116	.094	.082	.068	.055	.026	.022	.018	
4.0	.234	.180	.138	.201	.155	.120	.138	.108	.085	.080	.063	.050	.026	.021	.016	
5.0	.227	.170	.127	.195	.147	.111	.134	.103	.078	.078	.060	.046	.025	.020	.015	
6.0	.220	.161	.119	.189	.140	.104	.131	.098	.074	.076	.058	.044	.024	.019	.014	
7.0	.214	.155	.113	.184	.134	.099	.127	.094	.070	.074	.055	.042	.024	.018	.014	
8.0	.207	.149	.109	.178	.129	.095	.123	.091	.067	.072	.054	.040	.023	.018	.013	
9.0	.201	.144	.106	.173	.125	.092	.120	.088	.065	.070	.052	.039	.023	.017	.013	
10.0	.196	.140	.103	.169	.122	.090	.117	.086	.064	.068	.051	.038	.022	.017	.013	

C Range: 0 - 360DEG
 C Interval: 22.5DEG
 Test Speed: HIGH
 Temperature:25.1DEG
 Operators:Wilson
 Test Date:2022-12-15

γ Range: 0 - 180DEG
 γ Interval: 0.5DEG
 Test System:EVERFINE GO-R5000_V2 SYSTEM V2.00.444
 Humidity:60.5%
 Test Distance:2.635m [K=1.0000]
 Remarks: File No.: WT-F-504-3206-01-A

Checker: Near Gao

Assessor: Akin Xu

UGR(Unified Glare Rating) Table

Test:U:120.12V I:0.2098A P:25.070W PF:0.9940 Freq:60.00Hz										
Lamp Flux:1783.2lx1 lm										
NAME:			TYPE:			WEIGHT:				
SPEC.:			DIM.:			SERIAL No.:				
MFR.:			SUR.:			Shielding Angle:				
ceiling/cavity	0.7	0.7	0.5	0.5	0.3	0.7	0.7	0.5	0.5	0.3
walls	0.5	0.3	0.5	0.3	0.3	0.5	0.3	0.5	0.3	0.3
working plane	0.2	0.2	0.2	0.2	0.2	0.2	0.2	0.2	0.2	0.2
Room dimensions	Viewed crosswise					Viewed endwise				
x = 2H y = 2H	17.1	18.5	17.5	18.9	19.3	16.9	18.3	17.3	18.7	19.1
3H	18.5	19.7	18.9	20.1	20.6	18.2	19.5	18.7	19.9	20.3
4H	19.0	20.1	19.4	20.6	21.0	18.7	19.8	19.1	20.3	20.7
6H	19.2	20.4	19.7	20.8	21.3	18.9	20.0	19.4	20.5	20.9
8H	19.3	20.4	19.8	20.9	21.4	19.0	20.0	19.5	20.5	21.0
12H	19.4	20.4	19.9	20.9	21.4	19.0	20.1	19.5	20.5	21.0
4H 2H	17.6	18.8	18.1	19.2	19.7	17.5	18.7	17.9	19.1	19.5
3H	19.1	20.2	19.6	20.6	21.1	18.9	19.9	19.4	20.4	20.9
4H	19.7	20.7	20.2	21.1	21.7	19.5	20.4	20.0	20.9	21.4
6H	20.1	20.9	20.7	21.5	22.0	19.8	20.6	20.4	21.2	21.7
8H	20.3	21.0	20.8	21.6	22.2	19.9	20.7	20.5	21.2	21.8
12H	20.4	21.1	21.0	21.7	22.3	20.0	20.7	20.6	21.3	21.9
8H 4H	19.9	20.6	20.4	21.2	21.8	19.6	20.4	20.2	20.9	21.5
6H	20.4	21.0	21.0	21.6	22.2	20.1	20.7	20.7	21.3	22.0
8H	20.6	21.2	21.2	21.8	22.4	20.3	20.9	20.9	21.4	22.1
12H	20.9	21.3	21.5	22.0	22.6	20.5	21.0	21.1	21.6	22.3
12H 4H	19.9	20.6	20.4	21.1	21.7	19.6	20.3	20.2	20.9	21.5
6H	20.4	21.0	21.0	21.6	22.2	20.1	20.7	20.8	21.3	22.0
8H	20.7	21.2	21.3	21.8	22.5	20.4	20.8	21.0	21.5	22.1
Variations with the observer position at spacings(CIE Pub.117):										
S = 1.0H	+ 0.2 / - 0.2					+ 0.2 / - 0.2				
1.5H	+ 0.2 / - 0.3					+ 0.2 / - 0.4				
2.0H	+ 0.2 / - 0.3					+ 0.2 / - 0.3				

CIE Pub.117, 1783 lm Total Lamp Luminous Flux Corrected (8log(F/F0) = 2.0)
 Area: 0.12876 m2

C Range: 0 - 360DEG
 C Interval: 22.5DEG
 Test Speed: HIGH
 Temperature:25.1DEG
 Operators:Wilson
 Test Date:2022-12-15

γ Range: 0 - 180DEG
 γ Interval: 0.5DEG
 Test System:EVERFINE GO-R5000_V2 SYSTEM V2.00.444
 Humidity:60.5%
 Test Distance:2.635m [K=1.0000]
 Remarks: File No.: WT-F-504-3206-01-A

Checker: Near Gao

Assessor: Akin Xu

UTILIZATION FACTORS TABLE

Test:U:120.12V I:0.2098A P:25.070W PF:0.9940 Freq:60.00Hz Lamp Flux:1783.2lx1 lm		
NAME:	TYPE:	WEIGHT:
SPEC.:	DIM.:	SERIAL No.:
MFR.:	SUR.:	Shielding Angle:

REFLECTANCE										
Ceiling	0.8	0.8	0.8	0.7	0.7	0.7	0.5	0.5	0.5	0
Walls	0.7	0.5	0.3	0.7	0.5	0.3	0.7	0.5	0.3	0
Working plane	0.2	0.2	0.2	0.2	0.2	0.2	0.2	0.2	0.2	0
ROOM INDEX	UTILIZATION FACTORS(PERCENT) $k(RI) \times RCR = 5$									
k = 0.60	55	43	37	54	43	36	52	42	36	29
0.80	65	53	46	63	53	46	61	51	45	37
1.00	73	62	55	72	61	54	68	62	53	45
1.25	80	70	62	78	69	62	75	66	60	52
1.50	85	75	68	83	74	67	79	71	65	56
2.00	92	83	77	90	82	76	85	78	73	63
2.50	96	88	82	93	86	80	88	82	77	67
3.00	99	92	87	96	90	85	91	86	82	71
4.00	103	98	93	100	95	91	94	90	87	75
5.00	106	101	97	103	98	94	96	93	90	77
ROOM INDEX	UF(total)									Direct
According to DIN EN 13032-2 2004			Suspended				SHRNOM = 1.25			

C Range: 0 - 360DEG
 C Interval: 22.5DEG
 Test Speed: HIGH
 Temperature:25.1DEG
 Operators:Wilson
 Test Date:2022-12-15

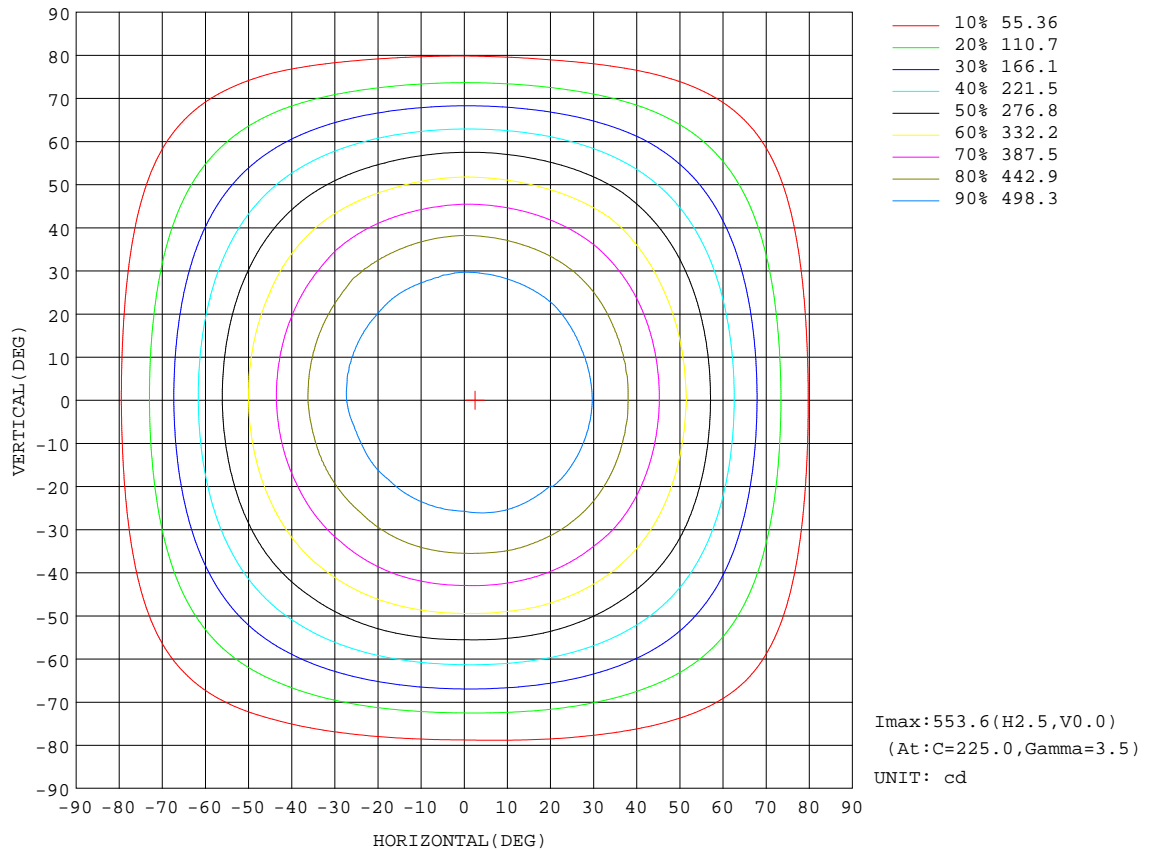
γ Range: 0 - 180DEG
 γ Interval: 0.5DEG
 Test System:EVERFINE GO-R5000_V2 SYSTEM V2.00.444
 Humidity:60.5%
 Test Distance:2.635m [K=1.0000]
 Remarks: File No.: WT-F-504-3206-01-A

Checker: Near Gao

Assessor: Akin Xu

ISOCANDELA DIAGRAM

Test:U:120.12V I:0.2098A P:25.070W PF:0.9940 Freq:60.00Hz Lamp Flux:1783.2lx1 lm		
NAME:	TYPE:	WEIGHT:
SPEC.:	DIM.:	SERIAL No.:
MFR.:	SUR.:	Shielding Angle:



C Range: 0 - 360DEG
 C Interval: 22.5DEG
 Test Speed: HIGH
 Temperature: 25.1DEG
 Operators: Wilson
 Test Date: 2022-12-15

γ Range: 0 - 180DEG
 γ Interval: 0.5DEG
 Test System: EVERFINE GO-R5000_V2 SYSTEM V2.00.444
 Humidity: 60.5%
 Test Distance: 2.635m [K=1.0000]
 Remarks: File No.: WT-F-504-3206-01-A

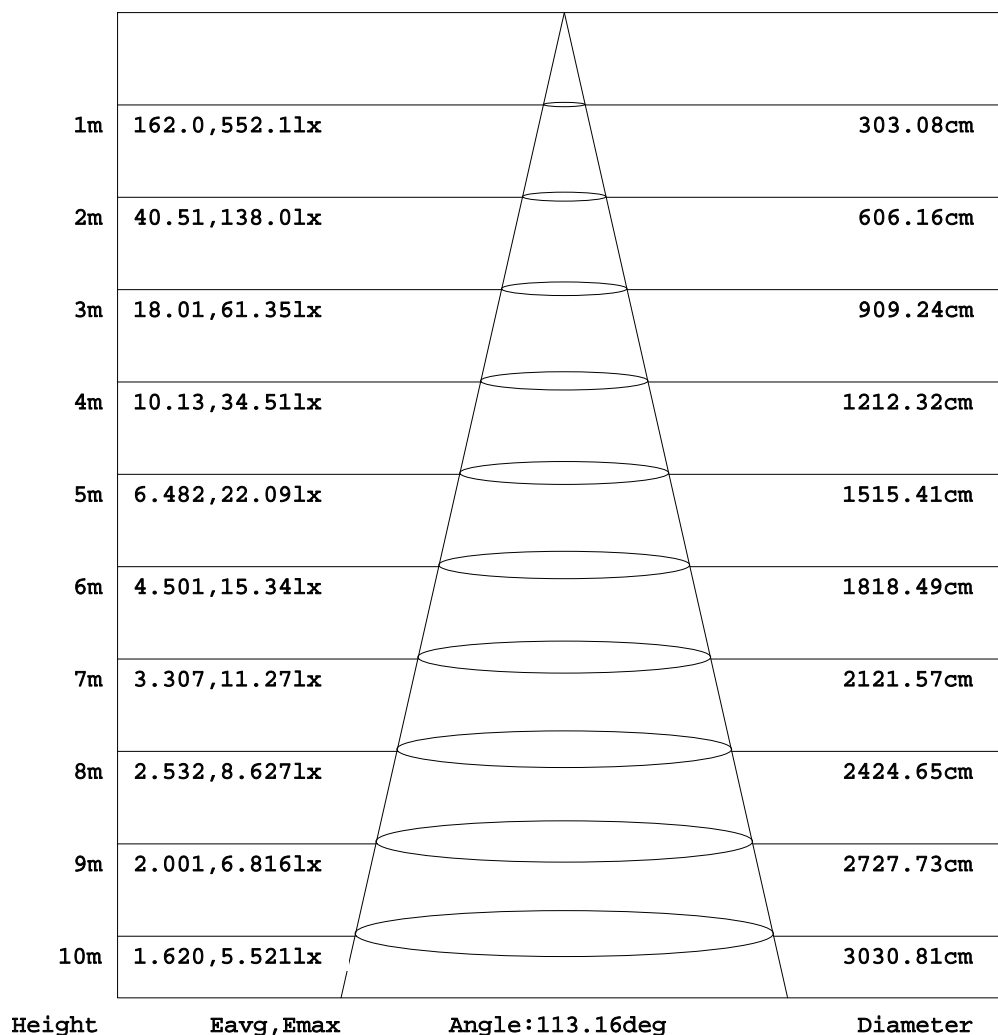
Checker: Near Gao

Assessor: Akin Xu

AAI Figure

Test:U:120.12V I:0.2098A P:25.070W PF:0.9940 Freq:60.00Hz Lamp Flux:1783.2lx1 lm		
NAME:	TYPE:	WEIGHT:
SPEC.:	DIM.:	SERIAL No.:
MFR.:	SUR.:	Shielding Angle:

Flux out:1207 lm



Note: The Curves indicate the illuminated area and the average illumination when the luminaire is at different distance.

C Range: 0 - 360DEG
C Interval: 22.5DEG
Test Speed: HIGH
Temperature: 25.1DEG
Operators: Wilson
Test Date: 2022-12-15

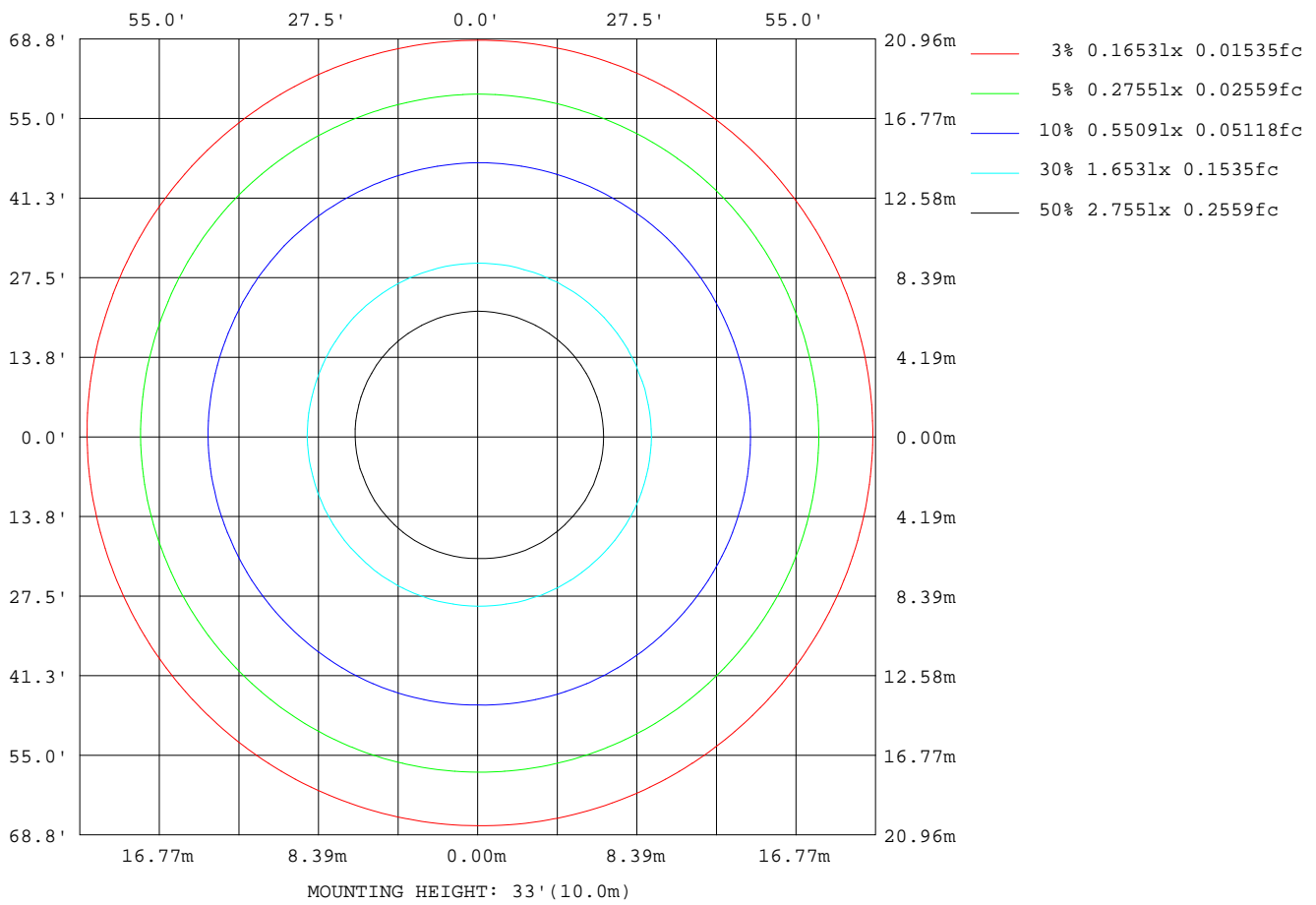
γ Range: 0 - 180DEG
γ Interval: 0.5DEG
Test System: EVERFINE GO-R5000_V2 SYSTEM V2.00.444
Humidity: 60.5%
Test Distance: 2.635m [K=1.0000]
Remarks: File No.: WT-F-504-3206-01-A

Checker: Near Gao

Assessor: Akin Xu

ISOLUX DIAGRAM

Test:U:120.12V I:0.2098A P:25.070W PF:0.9940 Freq:60.00Hz Lamp Flux:1783.2lx1 lm		
NAME:	TYPE:	WEIGHT:
SPEC.:	DIM.:	SERIAL No.:
MFR.:	SUR.:	Shielding Angle:



C Range: 0 - 360DEG
 C Interval: 22.5DEG
 Test Speed: HIGH
 Temperature: 25.1DEG
 Operators: Wilson
 Test Date: 2022-12-15

γ Range: 0 - 180DEG
 γ Interval: 0.5DEG
 Test System: EVERFINE GO-R5000_V2 SYSTEM V2.00.444
 Humidity: 60.5%
 Test Distance: 2.635m [K=1.0000]
 Remarks: File No.: WT-F-504-3206-01-A

Checker: Near Gao

Assessor: Akin Xu

LED Avg.L Report

Test:U:120.12V I:0.2098A P:25.070W PF:0.9940 Freq:60.00Hz Lamp Flux:1783.2lx1 lm		
NAME:	TYPE:	WEIGHT:
SPEC.:	DIM.:	SERIAL No.:
MFR.:	SUR.:	Shielding Angle:

AvgL	cd/m2
L_0~180(65)av	3520
L_0~180(75)av	2809
L_0~180(85)av	2705
L_90~270(65)av	3561
L_90~270(75)av	2786
L_90~270(85)av	2529
L_45(65)av	3533
L_45(75)av	2792
L_45(85)av	2624

Standard: GB/T 29293-2012

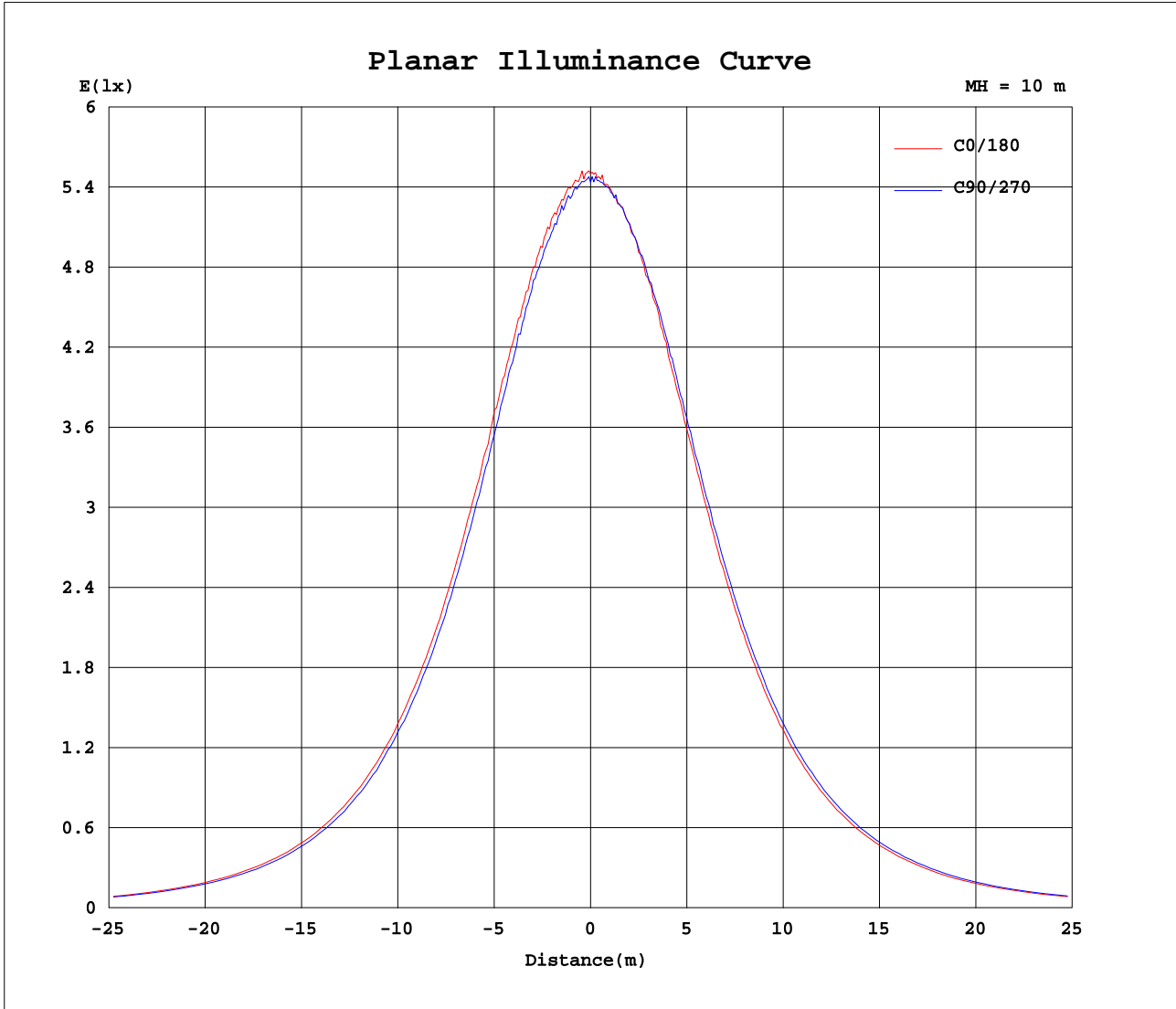
C Range: 0 - 360DEG
 C Interval: 22.5DEG
 Test Speed: HIGH
 Temperature:25.1DEG
 Operators:Wilson
 Test Date:2022-12-15

γ Range: 0 - 180DEG
 γ Interval: 0.5DEG
 Test System:EVERFINE GO-R5000_V2 SYSTEM V2.00.444
 Humidity:60.5%
 Test Distance:2.635m [K=1.0000]
 Remarks: File No.: WT-F-504-3206-01-A

Checker: Near Gao

Assessor: Akin Xu

Planar Illuminance Curve



C Range: 0 - 360DEG
 C Interval: 22.5DEG
 Test Speed: HIGH
 Temperature: 25.1DEG
 Operators: Wilson
 Test Date: 2022-12-15

γ Range: 0 - 180DEG
 γ Interval: 0.5DEG
 Test System: EVERFINE GO-R5000_V2 SYSTEM V2.00.444
 Humidity: 60.5%
 Test Distance: 2.635m [K=1.0000]
 Remarks: File No.: WT-F-504-3206-01-A

Checker: Near Gao

Assessor: Akin Xu

LUMINOUS DISTRIBUTION INTENSITY DATA

Test:U:120.12V I:0.2098A P:25.070W PF:0.9940 Freq:60.00Hz Lamp Flux:1783.2lx1 lm		
NAME:	TYPE:	WEIGHT:
SPEC.:	DIM.:	SERIAL No.:
MFR.:	SUR.:	Shielding Angle:

Table--1

UNIT: cd

C(DEG) γ (DEG)	0	22.5	45	67.5	90	112.5	135	157.5	180	202.5	225	247.5	270	292.5	315	337.5			
0	546	546	546	546	546	546	546	546	546	546	546	546	546	546	546	546			
5	545	545	548	543	546	548	542	544	544	543	545	544	548	549	545	548			
10	540	545	542	540	538	539	538	541	541	542	544	543	547	544	546	546			
15	541	539	541	534	534	533	531	534	534	535	541	539	545	541	541	541			
20	530	533	528	523	520	521	523	520	522	528	531	532	537	534	536	532			
25	518	517	515	506	507	501	499	505	506	509	516	515	519	518	518	520			
30	492	494	489	482	478	475	474	478	479	484	490	488	498	495	499	496			
35	463	462	458	452	449	446	443	447	448	451	461	461	467	466	468	470			
40	427	426	420	415	411	409	408	412	412	416	423	424	432	431	432	431			
45	388	384	381	376	374	370	368	373	375	376	385	386	393	393	392	396			
50	341	341	337	333	328	327	325	328	330	332	341	342	350	349	350	347			
55	295	295	291	287	283	283	281	283	285	287	294	295	303	301	303	300			
60	246	245	241	237	234	234	232	236	238	241	246	247	255	252	254	250			
65	195	193	191	188	187	185	183	185	188	190	195	197	201	200	200	201			
70	144	143	140	137	136	134	134	136	138	142	145	146	149	148	148	147			
75	95.4	94.9	92.8	90.6	87.8	86.9	85.9	89.0	91.8	93.8	96.7	95.8	98.0	96.8	96.7	95.8			
80	53.0	54.1	52.1	50.3	47.1	46.0	45.5	48.2	51.6	52.9	55.3	53.7	54.3	52.1	53.4	53.4			
85	31.2	31.7	30.3	28.5	26.1	25.1	25.1	27.1	29.5	30.9	32.4	31.2	30.7	29.6	30.1	30.9			
90	23.4	23.3	22.3	20.5	18.9	17.8	18.0	19.4	21.3	23.0	23.7	23.3	22.9	22.4	22.6	23.1			
95	13.6	11.7	16.4	18.3	17.1	16.0	13.6	9.39	12.5	11.7	18.7	20.9	20.9	20.1	18.0	12.1			
100	17.7	16.6	12.5	14.9	15.6	13.1	10.7	13.7	16.3	16.4	12.8	16.1	18.3	16.4	12.3	14.9			
105	24.9	21.1	17.3	14.8	15.0	13.0	14.6	18.0	23.0	21.5	16.3	13.9	15.8	14.7	15.7	20.6			
110	27.0	22.5	24.3	18.2	16.9	16.4	20.2	19.4	24.9	22.7	22.8	17.0	16.7	17.3	22.6	22.2			
115	30.0	25.2	29.9	24.5	21.8	22.3	25.7	21.3	27.6	24.1	28.5	22.9	20.6	23.1	28.6	24.6			
120	29.9	26.0	34.8	31.3	28.6	29.1	31.3	22.7	26.5	25.5	33.5	29.9	28.3	30.9	34.2	26.7			
125	29.7	29.4	39.6	37.6	35.9	35.7	36.9	30.1	27.6	32.2	38.6	36.4	36.1	37.4	38.6	31.4			
130	25.7	33.6	43.8	42.5	41.7	41.0	41.5	31.7	27.1	35.3	43.2	42.2	41.8	43.2	43.0	34.1			
135	32.8	36.8	43.0	47.0	46.5	45.8	39.4	36.9	34.1	37.3	42.4	47.1	46.8	47.5	43.2	37.8			
140	37.5	37.8	44.6	46.8	49.3	45.8	44.0	33.0	40.1	39.0	46.7	48.7	50.2	48.3	46.3	29.2			
145	28.7	23.1	43.5	45.6	45.4	43.7	44.0	31.5	35.5	33.9	46.0	46.8	47.2	48.3	45.7	37.2			
150	40.6	37.8	45.2	47.5	45.9	44.2	41.9	41.0	36.9	33.9	44.5	47.0	49.2	48.6	45.6	39.1			
155	42.2	42.0	40.2	46.1	41.1	43.4	39.5	38.9	46.4	37.9	41.6	46.8	45.7	45.0	44.4	41.4			
160	39.3	37.1	37.1	31.3	34.1	38.2	35.9	34.2	34.2	36.0	38.9	41.0	42.2	30.9	36.2	36.0			
165	33.0	32.6	33.6	26.4	24.8	34.3	33.1	30.0	28.7	30.0	35.6	36.0	35.3	26.0	27.4	29.2			
170	23.5	25.6	22.6	16.5	19.9	27.0	22.6	25.9	24.7	25.2	24.6	29.4	30.9	24.7	15.5	21.8			
175	17.7	14.1	12.7	10.6	12.8	16.7	17.0	18.9	18.3	18.1	18.1	18.1	18.9	17.5	16.1	16.6			
180	16.8	16.6	18.7	20.4	18.7	20.0	16.4	16.0	16.8	16.7	18.6	20.5	18.8	20.0	16.4	16.0			

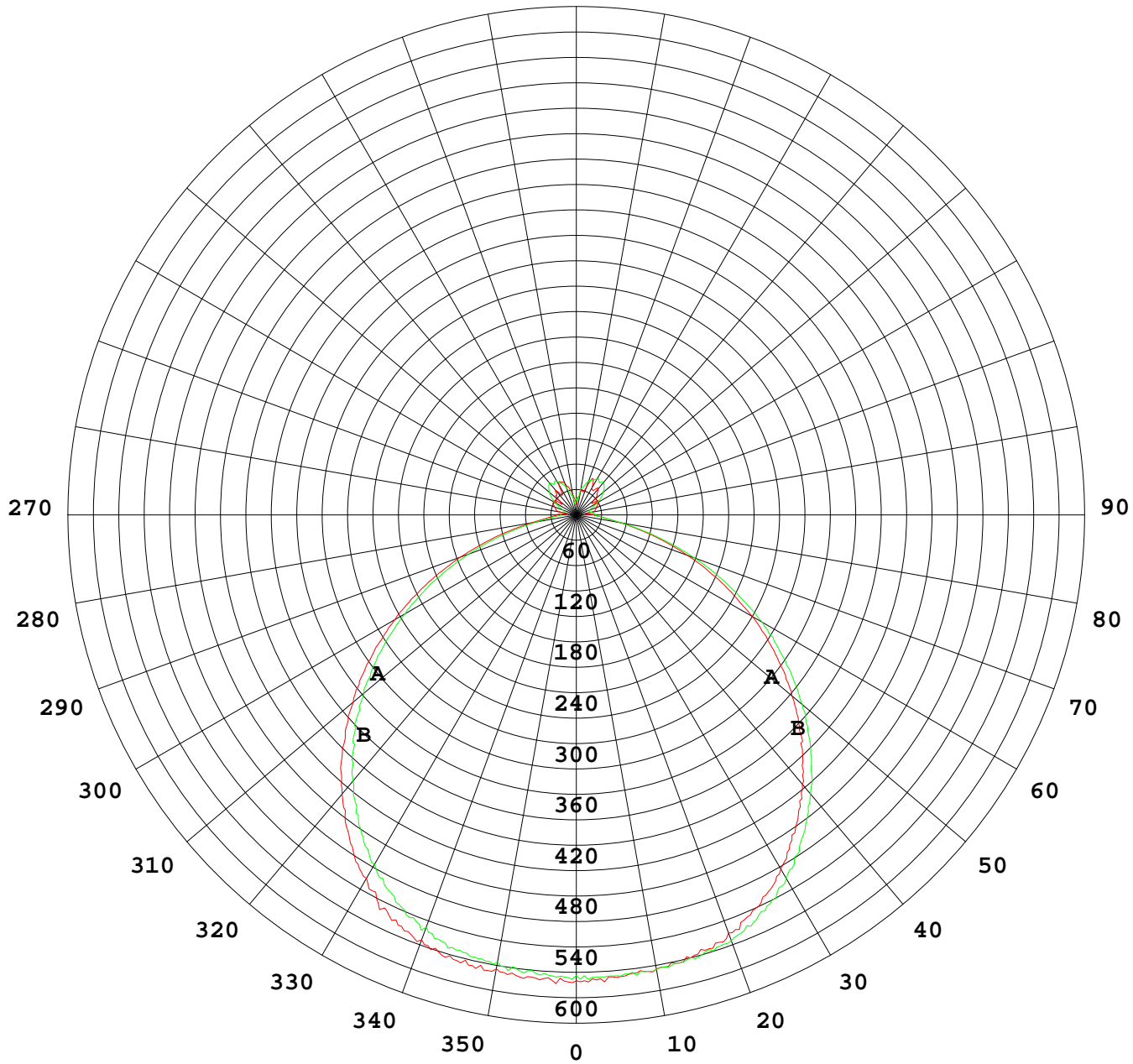
C Range: 0 - 360DEG
 C Interval: 22.5DEG
 Test Speed: HIGH
 Temperature:25.1DEG
 Operators:Wilson
 Test Date:2022-12-15

γ Range: 0 - 180DEG
 γ Interval: 0.5DEG
 Test System:EVERFINE GO-R5000_V2 SYSTEM V2.00.444
 Humidity:60.5%
 Test Distance:2.635m [K=1.0000]
 Remarks: File No.: WT-F-504-3206-01-A

Checker: Near Gao

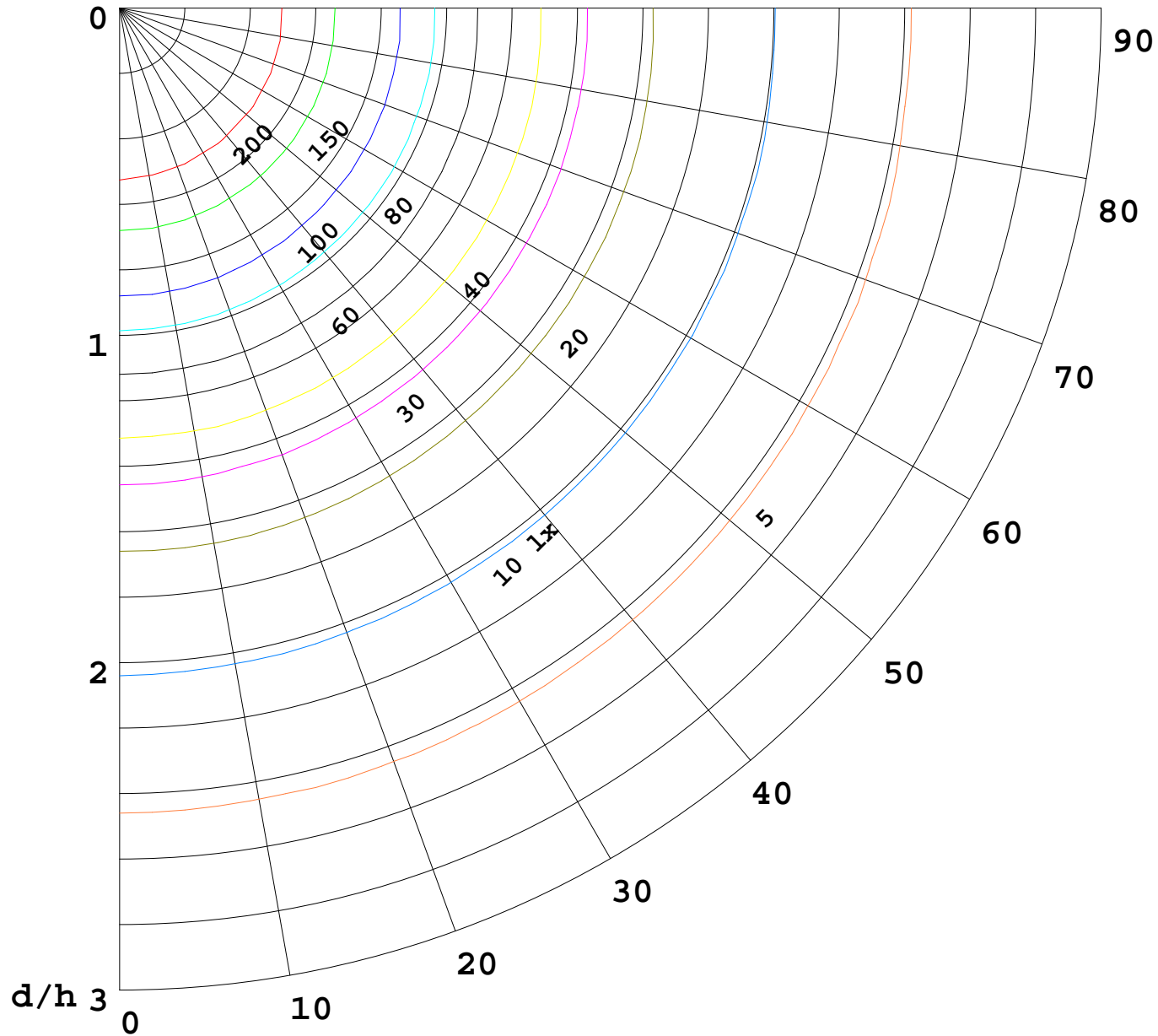
Assessor: Akin Xu

I (cd)



1000 lm

$K = 1$



F = 1000 lm
K = 0.7
Hcc = 0.8 m
Hfc = 0.0 m
Eave = 100 lx

	Pcc	Pw	Pfc
—————	70	50	30
—————	50	30	20

